

Welcome to the ACNP Women's Session

Stephanie Borgland, Ph.D.
Kathleen Brady, M.D., Ph.D.
Women's Committee Chairs

Women's Committee

Stephanie Borgland, Chair

Kathleen Brady, Co-Chair

Jill Becker

Hilary Blumberg

Heather Brenhouse

Rita Fuchs

David Hsu

Shafali Jeste

Pamela Mahon

Courtney Miller

Guo-Li Ming

Catherine Monk

Kate Nautiyal

Gretchen Neigh

Marta Pecina

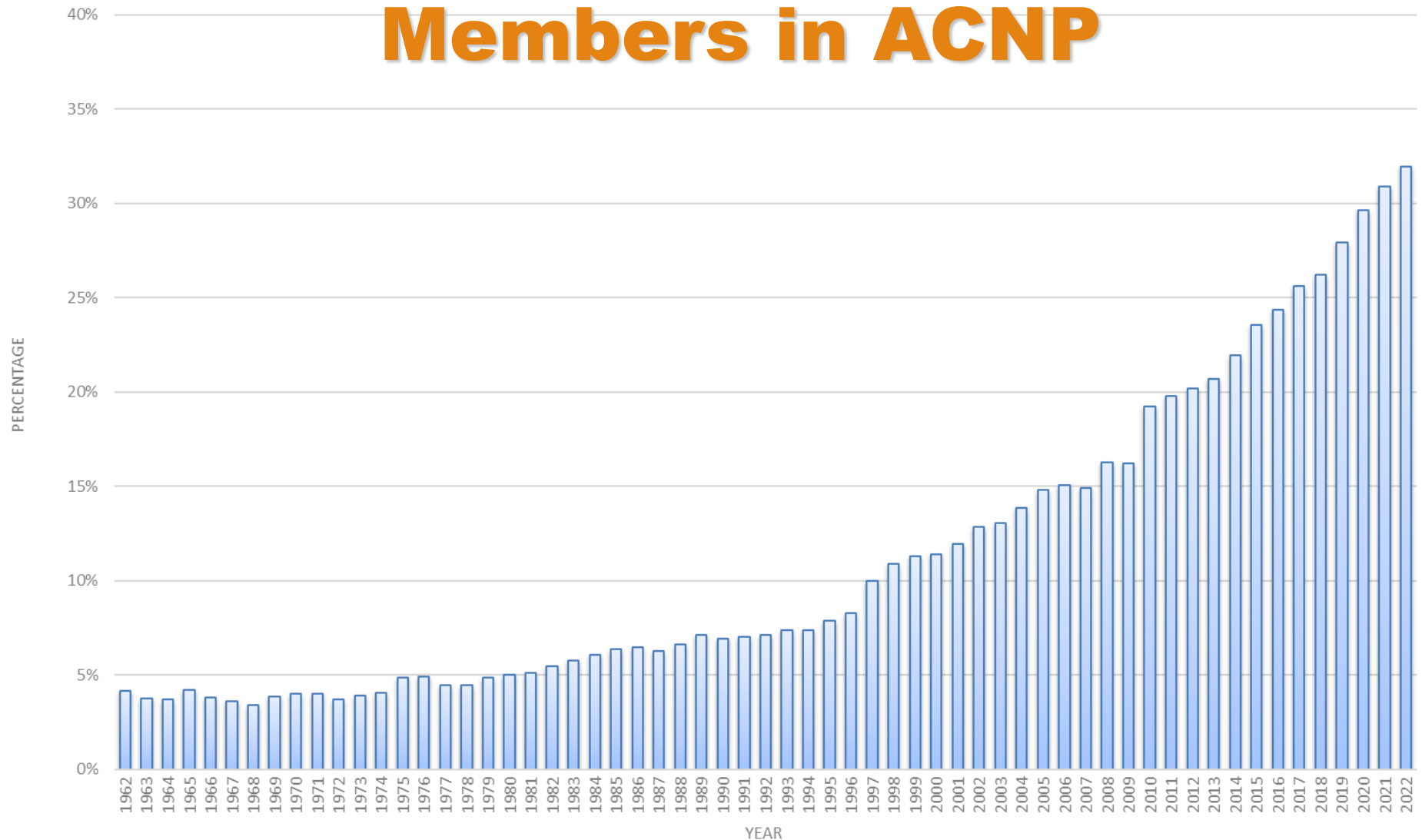
Melissa Perreault

Eva Velthorst

Kimberly Yonkers, Ex-Officio

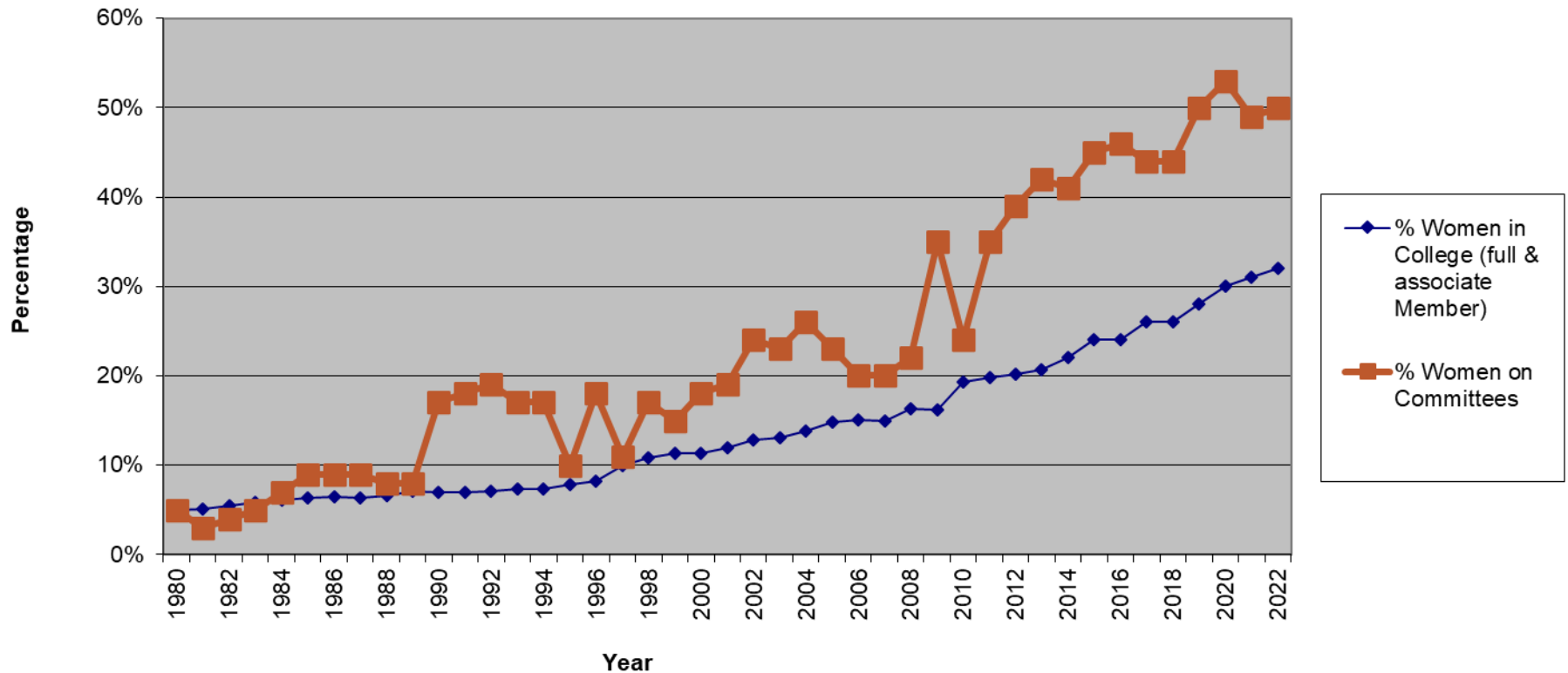
Ellen Leibenluft, Council Liaison

Percentages of Women Members in ACNP

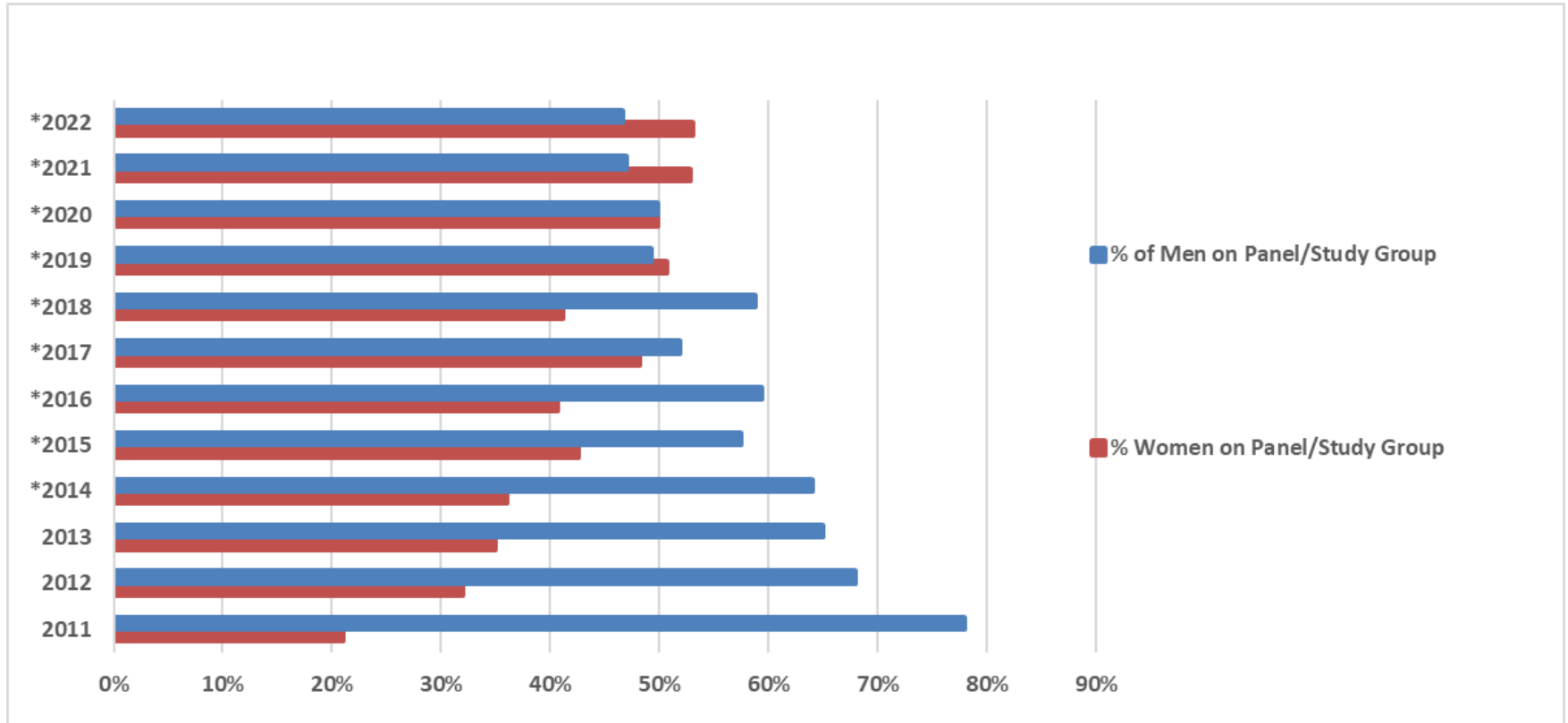


Women make up 32% of the College membership.

% Women in College & on Committees



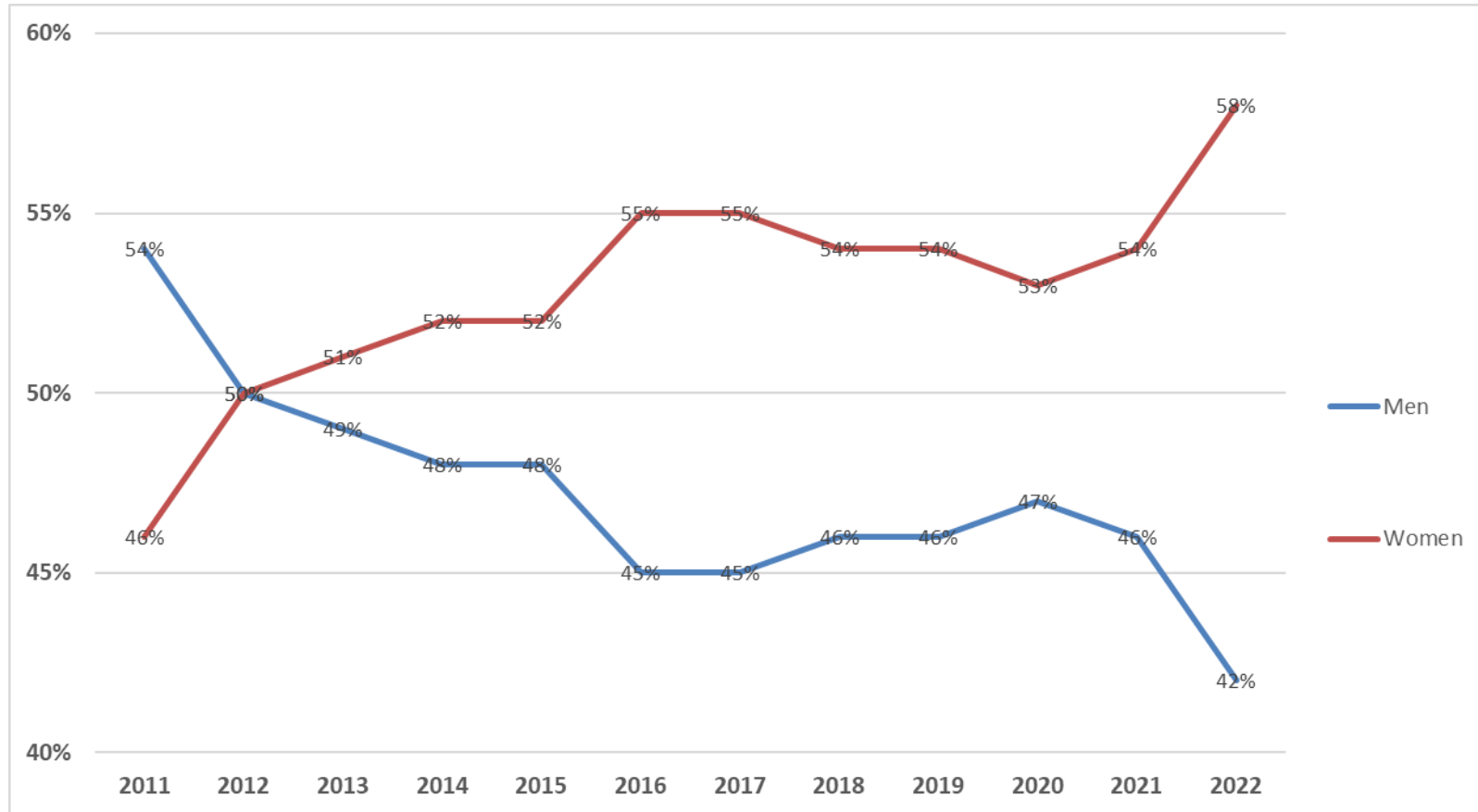
% Women/Men in Panels/Mini-Panels/Study Groups



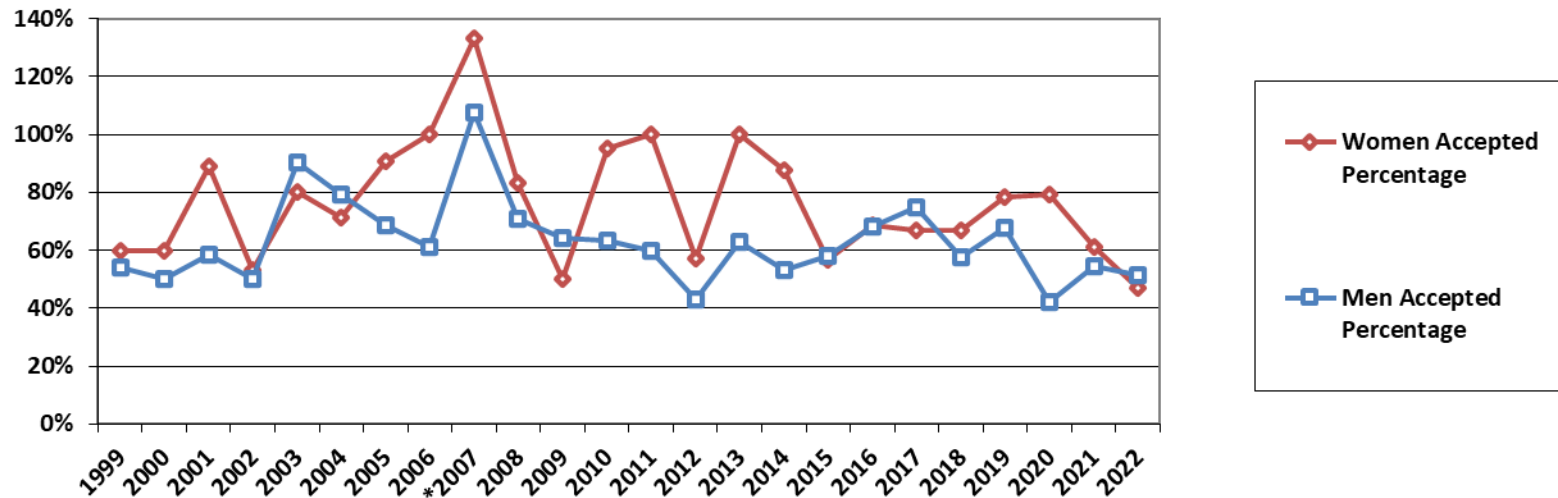
***2011-2013 data includes mini-panel roles**

****2014-2022 data includes mini-panel roles and does not include discussants, as that role was eliminated.**

Travel Award Percent Applicants

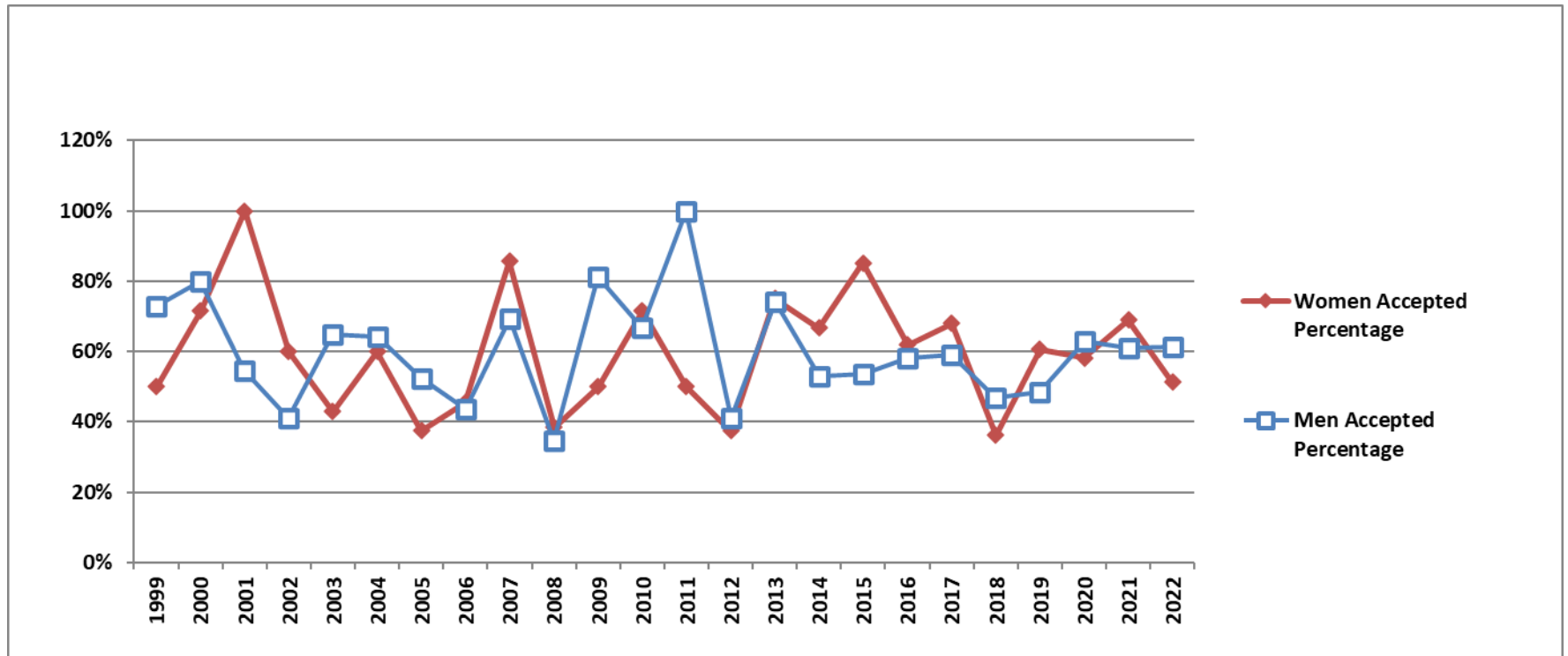


Regular Member Acceptance



***There were more accepts than applications in 2007 since several of the Associate Member applications were accepted as Members.**

Associate Member Acceptance



Women in Leadership Roles & Honorific Award Recipients

Progress, but room to improve.....

Honorific Awards	% of Women
ACNP Presidents	16%
ACNP Council	20%
Julius Axelrod Mentorship Award	16%
Dolores Shockley Diversity and Inclusion Advancement Award	50%
Daniel H. Efron Research Award	11%
Joel Elkes Research Award	19%
Paul Hoch Distinguished Service Award	12%
Eva King Killam Research Award	46%
Barbara Fish Memorial Award	50%
Media Award	42%
Public Service Award	29%